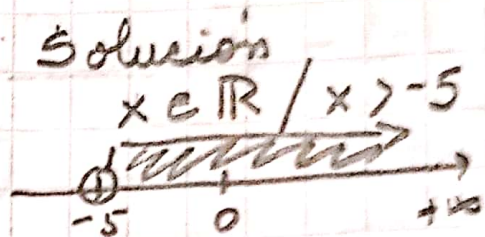
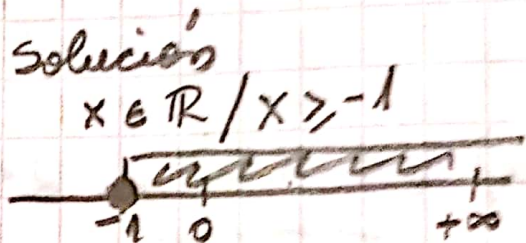


# Cuarto Medio (Módulo 8)

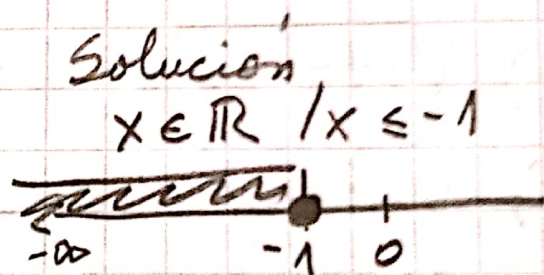
$$\begin{aligned} \text{a) } 5x - 1 &< 7x + 9 \\ 5x - 7x &< 9 + 1 \\ -2x &< 10 \quad /: -2 \\ x &> -5 \end{aligned}$$



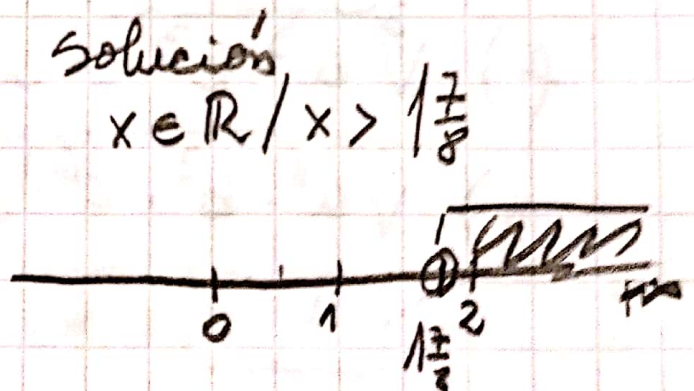
$$\begin{aligned} \text{b) } 12x + 7 &\geq 3x - 2 \\ 12x - 3x &\geq -2 - 7 \\ 9x &\geq -9 \quad /: 9 \\ x &\geq -1 \end{aligned}$$



$$\begin{aligned} \text{c) } 6 - 8x + 3 &\leq -9x + 7 - x \\ -8x + 9x + x &\leq 7 - 6 - 3 \\ 2x &\leq -2 \quad /: 2 \\ x &\leq -1 \end{aligned}$$



$$\begin{aligned} \text{d) } -x - 1 + 2x &> 9 - 7x + 5 \\ -x + 2x + 7x &> 9 + 5 + 1 \\ 8x &> 15 \\ x &> \frac{15}{8} = 1\frac{7}{8} \end{aligned}$$



$$\begin{aligned}
 e) \quad x - (7x - 3) &< 7 - 4x - 5 \\
 x - 7x + 3 &< 7 - 4x - 5 \\
 x - 7x + 5x &< 7 - 5 - 3 \\
 -1x &< -1 \quad | \cdot -1 \\
 x &> 1
 \end{aligned}$$

Solución

$$x \in \mathbb{R} / x > 1$$



$$\begin{aligned}
 f) \quad 2x &\leq 2(x - 1) \\
 2x &\leq 2x - 2 \\
 2x - 2x &\leq -2 \\
 0 &\leq -2
 \end{aligned}$$

no existe solución