

Cuarto Medio Electivo (Modulo I)

$$1) \begin{cases} 3x + 5y = 8 \\ 4x - 3y = 1 \end{cases}$$

$$\begin{aligned} 3x + 5y &= 8 \\ 5y &= 8 - 3x \\ y &= \frac{8 - 3x}{5} \end{aligned}$$

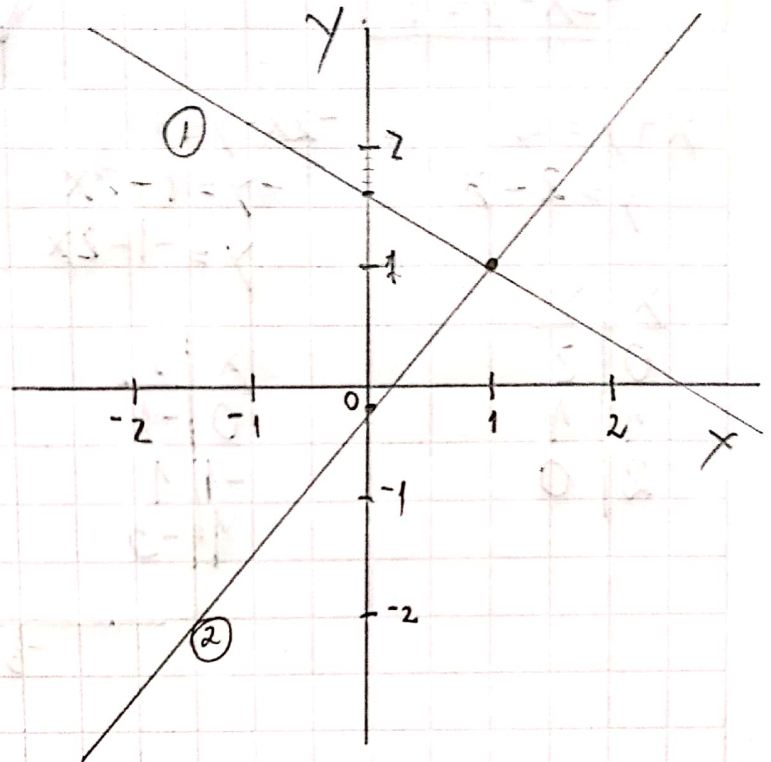
①

X	Y
0	$\frac{8}{5} = 1,6$
1	1

$$\begin{aligned} 4x - 3y &= 1 \\ -3y &= 1 - 4x \\ y &= \frac{4x - 1}{3} \end{aligned}$$

②

X	Y
0	$-\frac{1}{3}$
1	1



$$2) \begin{cases} 3x + 2y = 4 \\ 2x - 3y = 7 \end{cases}$$

$$\begin{aligned} 3x + 2y &= 4 \\ y &= \frac{4 - 3x}{2} \end{aligned}$$

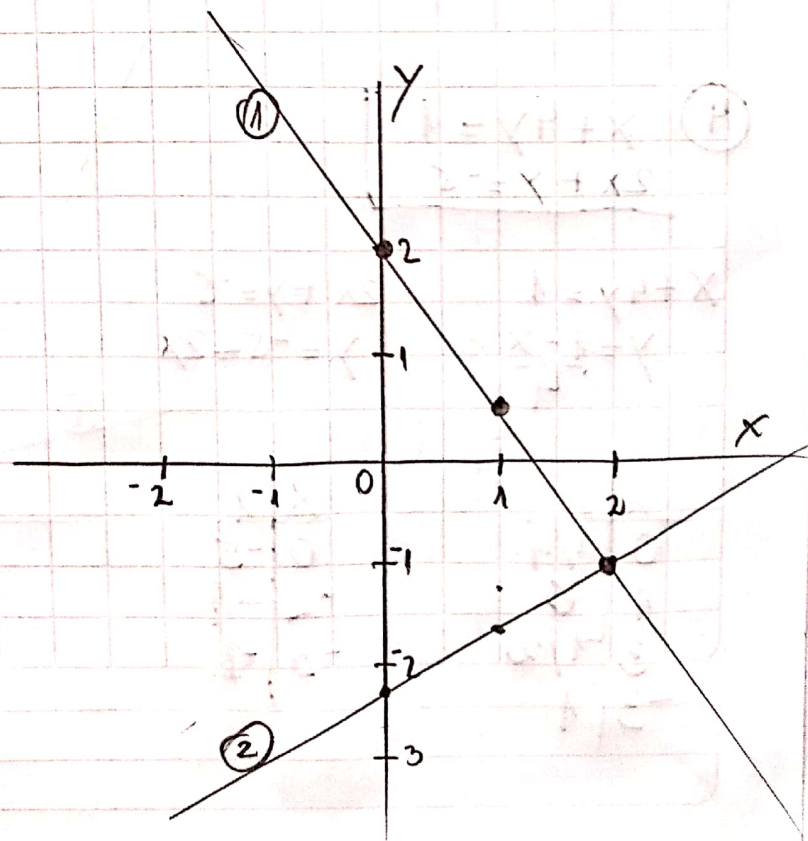
①

X	Y
0	2
1	$0,5 = \frac{1}{2}$
2	-1

$$\begin{aligned} 2x - 3y &= 7 \\ -y &= \frac{7 - 2x}{3} \\ y &= \frac{2x - 7}{3} \end{aligned}$$

②

X	Y
0	$-\frac{7}{3}$
2	-1
1	$-\frac{5}{3}$



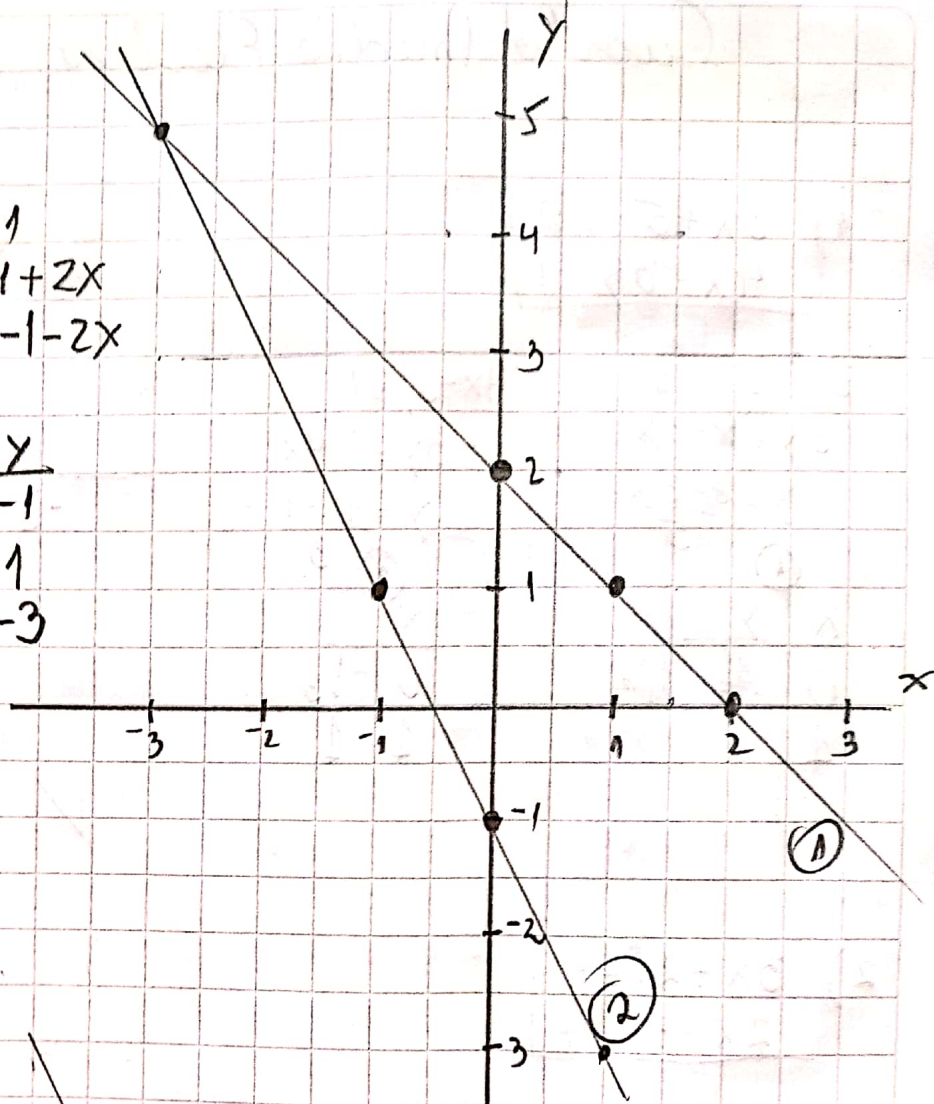
$$\textcircled{3} \quad \begin{cases} x+y=2 \\ -2x-y=1 \end{cases}$$

$$\begin{aligned} x+y &= 2 \\ y &= 2-x \end{aligned}$$

x	y
0	2
1	1
2	0

$$\begin{aligned} -2x-y &= 1 \\ -y &= 1+2x \\ y &= -1-2x \end{aligned}$$

x	y
0	-1
-1	1
-1	-3



$$\textcircled{4} \quad \begin{cases} x+4y=1 \\ 2x+y=-5 \end{cases}$$

$$\begin{aligned} x+4y &= 1 \\ y &= \frac{1-x}{4} \end{aligned}$$

x	y
0	1/4
1	0
3	-1/2
-3	1

$$\begin{aligned} 2x+y &= -5 \\ y &= -5-2x \end{aligned}$$

x	y
0	-5
-2	-1
-3	1

